

SPECIAL NOTES

1. Fly ash and fly based materials are to be used for construction.
2. There is not any water body (pond) in the plot.
3. Solar panel are provided at roof top for generation of energy of energy equivalent to 1% of the connected load.

PROJECT

PROPOSED B-CH-VII(BLOCKS 1,2,3A), G+H(BLOCK 3C,3D) & GH(UB-BLK-4) STORIED (40 MTS HEIGHT) RESIDENTIAL BUILDING UNDER MUJZA CHANPA, II NO. 35, RS/AR DAG NO 144,146,149,152,153,154,155,156,157,258, 259,260,261,262,263,264(P),265(P),266(P),267(P), 268, 270(P),271,275,276,277, 280, UNDER PATHAR GHATA GRAM PANCHAYAT, P.O. & P.S. BANARHAT NORTH 24 PARAGANAS, KOLKATA - 700135

WINDOW SCHEDULE

NO.	DESCRIPTION	WIDTH	HEIGHT
W1	ALUMINA CASSETT WINDOW	1800	1500
W2	ALUMINA CASSETT WINDOW	1800	1500
W3	ALUMINA CASSETT WINDOW	1800	1500
W4	ALUMINA CASSETT WINDOW	1800	1500
W5	ALUMINA CASSETT WINDOW	1800	1500
W6	ALUMINA CASSETT WINDOW	1800	1500
W7	ALUMINA CASSETT WINDOW	1800	1500
W8	ALUMINA CASSETT WINDOW	1800	1500
W9	ALUMINA CASSETT WINDOW	1800	1500
W10	ALUMINA CASSETT WINDOW	1800	1500
W11	ALUMINA CASSETT WINDOW	1800	1500
W12	ALUMINA CASSETT WINDOW	1800	1500
W13	ALUMINA CASSETT WINDOW	1800	1500
W14	ALUMINA CASSETT WINDOW	1800	1500
W15	ALUMINA CASSETT WINDOW	1800	1500
W16	ALUMINA CASSETT WINDOW	1800	1500
W17	ALUMINA CASSETT WINDOW	1800	1500
W18	ALUMINA CASSETT WINDOW	1800	1500
W19	ALUMINA CASSETT WINDOW	1800	1500
W20	ALUMINA CASSETT WINDOW	1800	1500
W21	ALUMINA CASSETT WINDOW	1800	1500
W22	ALUMINA CASSETT WINDOW	1800	1500
W23	ALUMINA CASSETT WINDOW	1800	1500
W24	ALUMINA CASSETT WINDOW	1800	1500
W25	ALUMINA CASSETT WINDOW	1800	1500
W26	ALUMINA CASSETT WINDOW	1800	1500
W27	ALUMINA CASSETT WINDOW	1800	1500
W28	ALUMINA CASSETT WINDOW	1800	1500
W29	ALUMINA CASSETT WINDOW	1800	1500
W30	ALUMINA CASSETT WINDOW	1800	1500
W31	ALUMINA CASSETT WINDOW	1800	1500
W32	ALUMINA CASSETT WINDOW	1800	1500
W33	ALUMINA CASSETT WINDOW	1800	1500
W34	ALUMINA CASSETT WINDOW	1800	1500
W35	ALUMINA CASSETT WINDOW	1800	1500
W36	ALUMINA CASSETT WINDOW	1800	1500
W37	ALUMINA CASSETT WINDOW	1800	1500
W38	ALUMINA CASSETT WINDOW	1800	1500
W39	ALUMINA CASSETT WINDOW	1800	1500
W40	ALUMINA CASSETT WINDOW	1800	1500
W41	ALUMINA CASSETT WINDOW	1800	1500
W42	ALUMINA CASSETT WINDOW	1800	1500
W43	ALUMINA CASSETT WINDOW	1800	1500
W44	ALUMINA CASSETT WINDOW	1800	1500
W45	ALUMINA CASSETT WINDOW	1800	1500
W46	ALUMINA CASSETT WINDOW	1800	1500
W47	ALUMINA CASSETT WINDOW	1800	1500
W48	ALUMINA CASSETT WINDOW	1800	1500
W49	ALUMINA CASSETT WINDOW	1800	1500
W50	ALUMINA CASSETT WINDOW	1800	1500
W51	ALUMINA CASSETT WINDOW	1800	1500
W52	ALUMINA CASSETT WINDOW	1800	1500
W53	ALUMINA CASSETT WINDOW	1800	1500
W54	ALUMINA CASSETT WINDOW	1800	1500
W55	ALUMINA CASSETT WINDOW	1800	1500
W56	ALUMINA CASSETT WINDOW	1800	1500
W57	ALUMINA CASSETT WINDOW	1800	1500
W58	ALUMINA CASSETT WINDOW	1800	1500
W59	ALUMINA CASSETT WINDOW	1800	1500
W60	ALUMINA CASSETT WINDOW	1800	1500
W61	ALUMINA CASSETT WINDOW	1800	1500
W62	ALUMINA CASSETT WINDOW	1800	1500
W63	ALUMINA CASSETT WINDOW	1800	1500
W64	ALUMINA CASSETT WINDOW	1800	1500
W65	ALUMINA CASSETT WINDOW	1800	1500
W66	ALUMINA CASSETT WINDOW	1800	1500
W67	ALUMINA CASSETT WINDOW	1800	1500
W68	ALUMINA CASSETT WINDOW	1800	1500
W69	ALUMINA CASSETT WINDOW	1800	1500
W70	ALUMINA CASSETT WINDOW	1800	1500
W71	ALUMINA CASSETT WINDOW	1800	1500
W72	ALUMINA CASSETT WINDOW	1800	1500
W73	ALUMINA CASSETT WINDOW	1800	1500
W74	ALUMINA CASSETT WINDOW	1800	1500
W75	ALUMINA CASSETT WINDOW	1800	1500
W76	ALUMINA CASSETT WINDOW	1800	1500
W77	ALUMINA CASSETT WINDOW	1800	1500
W78	ALUMINA CASSETT WINDOW	1800	1500
W79	ALUMINA CASSETT WINDOW	1800	1500
W80	ALUMINA CASSETT WINDOW	1800	1500
W81	ALUMINA CASSETT WINDOW	1800	1500
W82	ALUMINA CASSETT WINDOW	1800	1500
W83	ALUMINA CASSETT WINDOW	1800	1500
W84	ALUMINA CASSETT WINDOW	1800	1500
W85	ALUMINA CASSETT WINDOW	1800	1500
W86	ALUMINA CASSETT WINDOW	1800	1500
W87	ALUMINA CASSETT WINDOW	1800	1500
W88	ALUMINA CASSETT WINDOW	1800	1500
W89	ALUMINA CASSETT WINDOW	1800	1500
W90	ALUMINA CASSETT WINDOW	1800	1500
W91	ALUMINA CASSETT WINDOW	1800	1500
W92	ALUMINA CASSETT WINDOW	1800	1500
W93	ALUMINA CASSETT WINDOW	1800	1500
W94	ALUMINA CASSETT WINDOW	1800	1500
W95	ALUMINA CASSETT WINDOW	1800	1500
W96	ALUMINA CASSETT WINDOW	1800	1500
W97	ALUMINA CASSETT WINDOW	1800	1500
W98	ALUMINA CASSETT WINDOW	1800	1500
W99	ALUMINA CASSETT WINDOW	1800	1500
W100	ALUMINA CASSETT WINDOW	1800	1500

NOTES

1. Dimensions are in mm.
2. Dimensions of columns or otherwise should be brought to the notice of consultant before starting the work.
3. The drawing is prepared on the basis of the information furnished by the client and the contractor. The contractor is responsible for the accuracy of the information furnished by him.
4. The drawing should be read in conjunction with the specifications mentioned in the structural drawings.
5. All R.C.C. work should be done as per specifications mentioned in the structural drawings.
6. Underpinning measures shall be taken at the time of construction of wall.
7. Depth of water reservoir shall not be more than the depth of column unless otherwise specified.
8. All external walls are 200/160 thick, and all internal walls are 100 thick, unless otherwise specified.
9. For details of reinforcement & RCC work refer structural drawings.
10. The top slab of the U.G.R. is structurally safe for taking load of heavy vehicles like tender.

UNDERTAKING BY THE OWNER

1. I/We confirm that the building operation to be undertaken shall be strictly in accordance with the Act and the rules and regulations made thereunder.
2. I/We confirm that no building materials shall be deposited in any street, shown in building plan, as laid appearance to the proposed building.

CERTIFICATE OF THE ARCHITECT

I certify that all the Architectural Drawing of the project prepared by me, complying with the New Town Kolkata Building Building Code, also certify that the drawing is prepared in accordance with the provisions of the Building Code of India, 1973, as amended, and that the drawing is submitted to the Competent Authority for obtaining sanction.

DECLARATION OF GEO-TECHNICAL ENGINEER

The geotechnical investigation has been carried out in accordance with the provisions of the Indian Standard IS: 10638-1982, and the report is attached herewith. The foundation design and construction is based on the data furnished by the client and the contractor. The contractor is responsible for the accuracy of the information furnished by him.

CERTIFICATE OF THE CIVIL/STRUCTURAL ENGINEER

I certify that the structural drawing and design of both the foundation and superstructure of the building has been made considering the Soil Test Report, and the design is in accordance with the provisions of the Indian Standard IS: 456-2000, and the design is submitted to the Competent Authority for obtaining sanction.

ARCHITECTURAL DRAWING

CLUBHOUSE - BLOCK 4

GROUND FLOOR PLAN, FIRST FLOOR PLAN, SECOND FLOOR PLAN, THIRD FLOOR PLAN, ROOF PLAN, ELEVATIONS & SECTIONS

SCALE ARCH/SANC/4/A

ARCHITECT

SANJIV J. PARIKH

ARCHITECT

10, RAJENDRA NAGAR, KOLKATA - 700016

PH: 91-32-2465-1130 / 4139

EMAIL: info@sanjivparikh.com

WEBSITE: www.sanjivparikh.com

ENGINEER

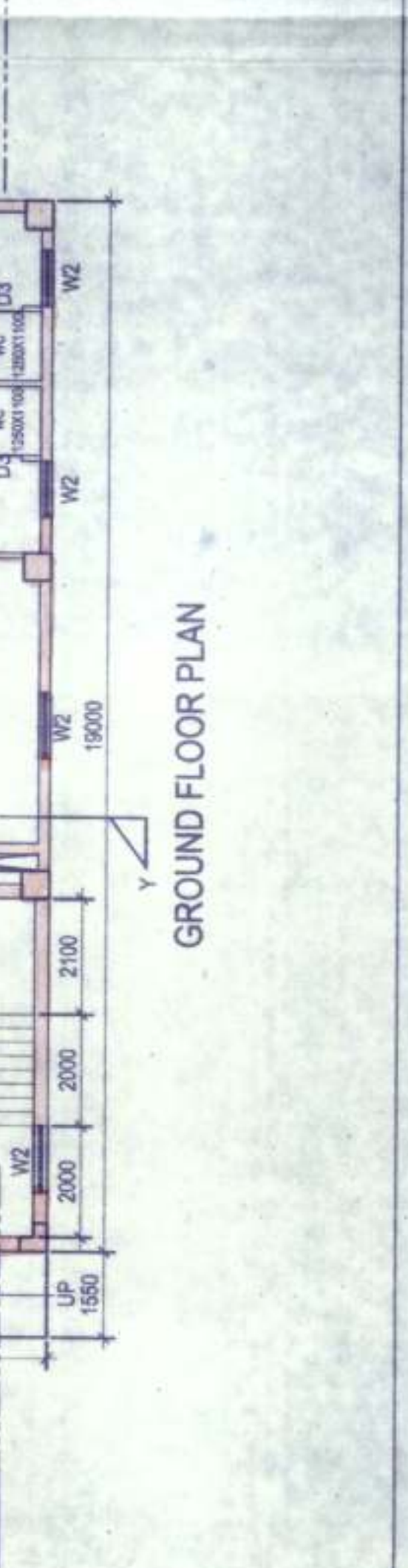
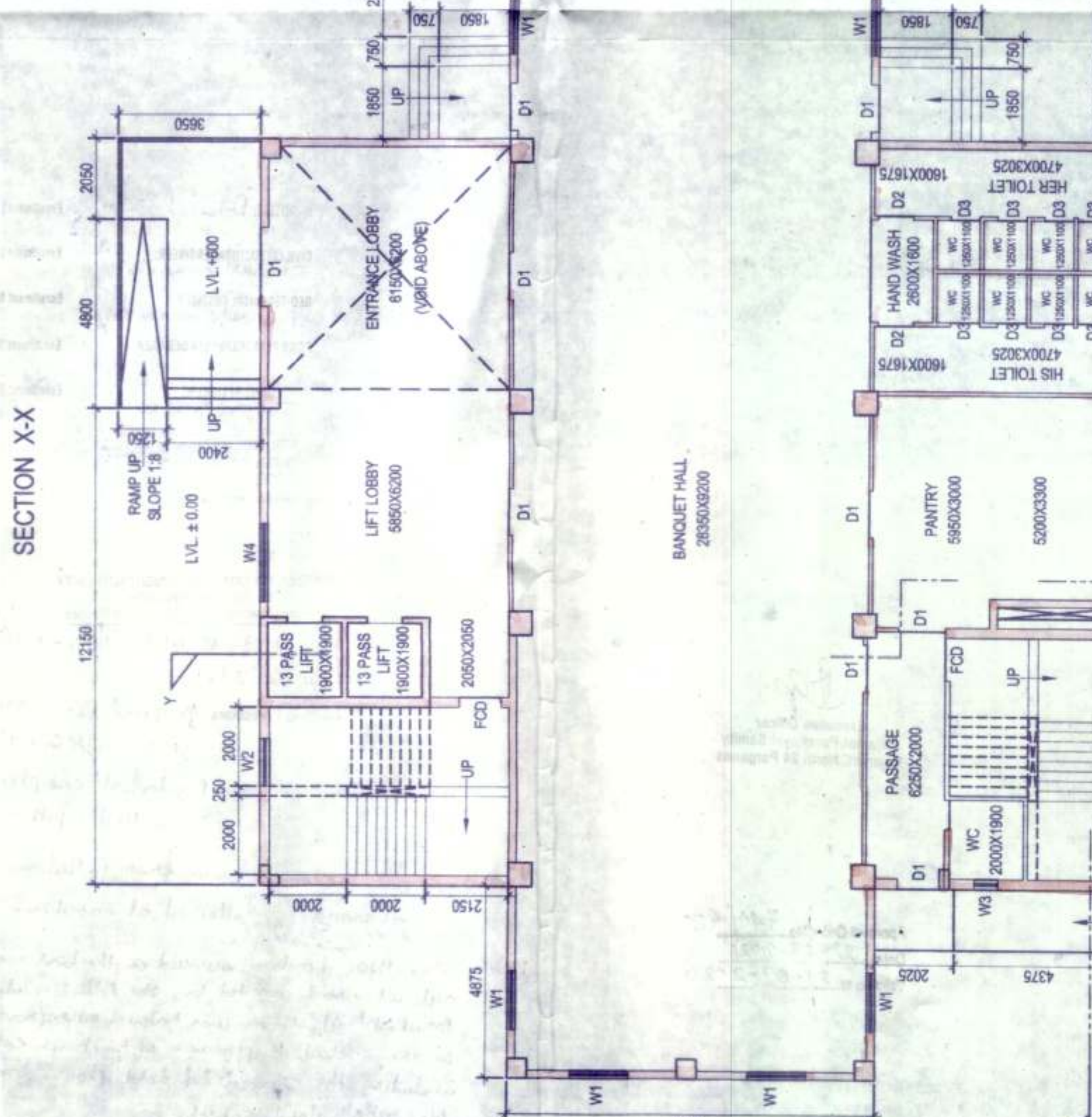
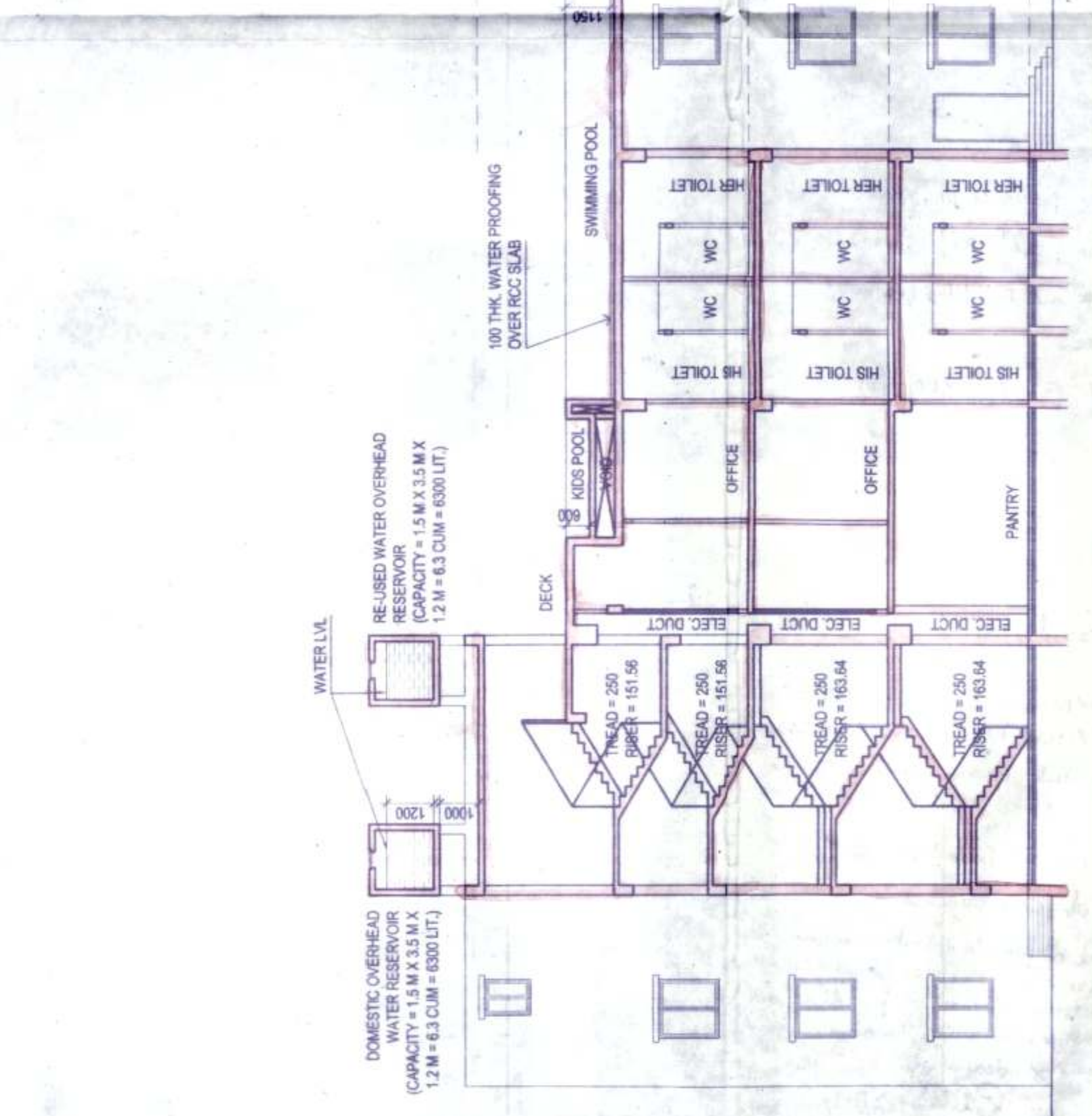
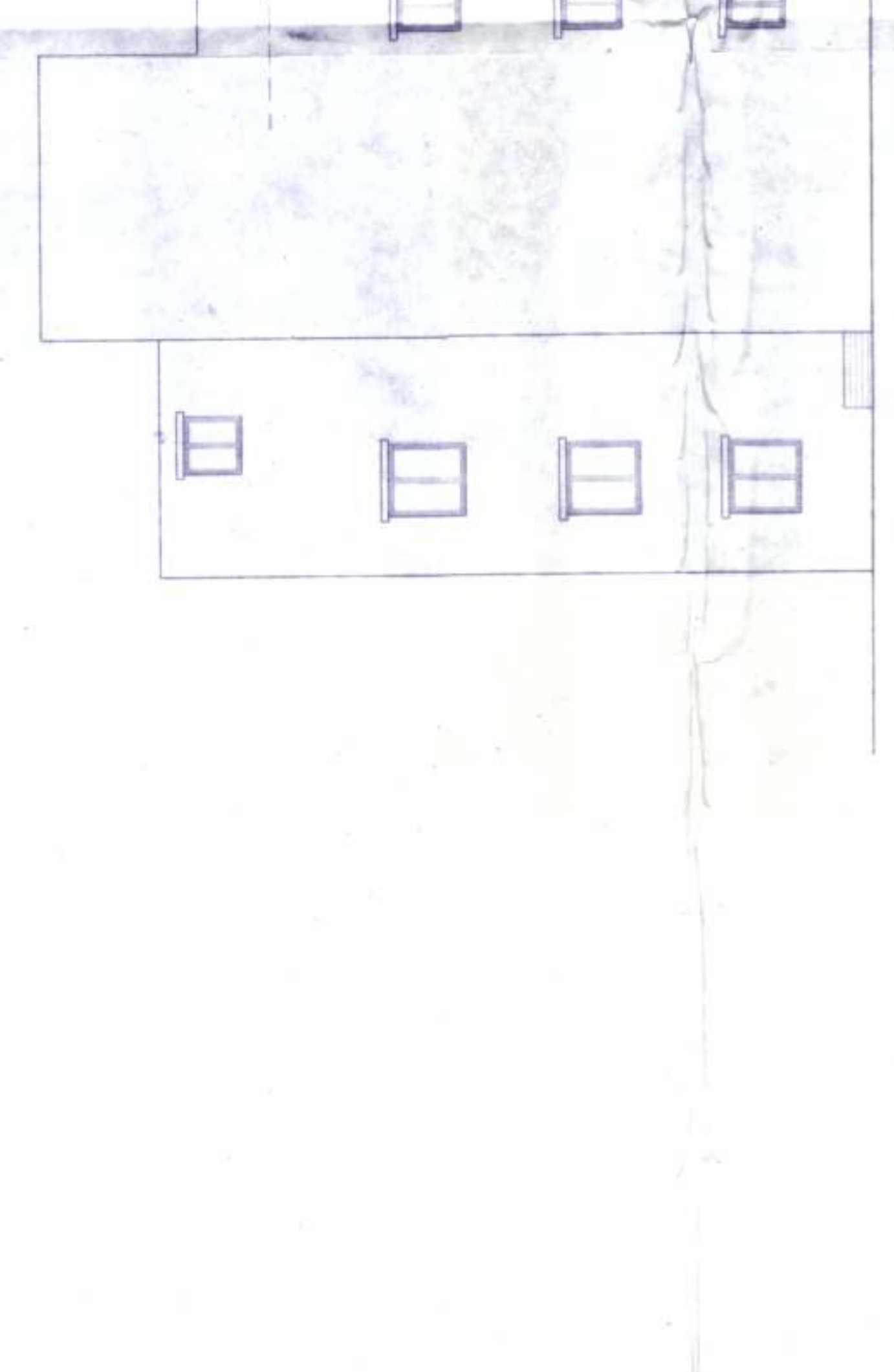
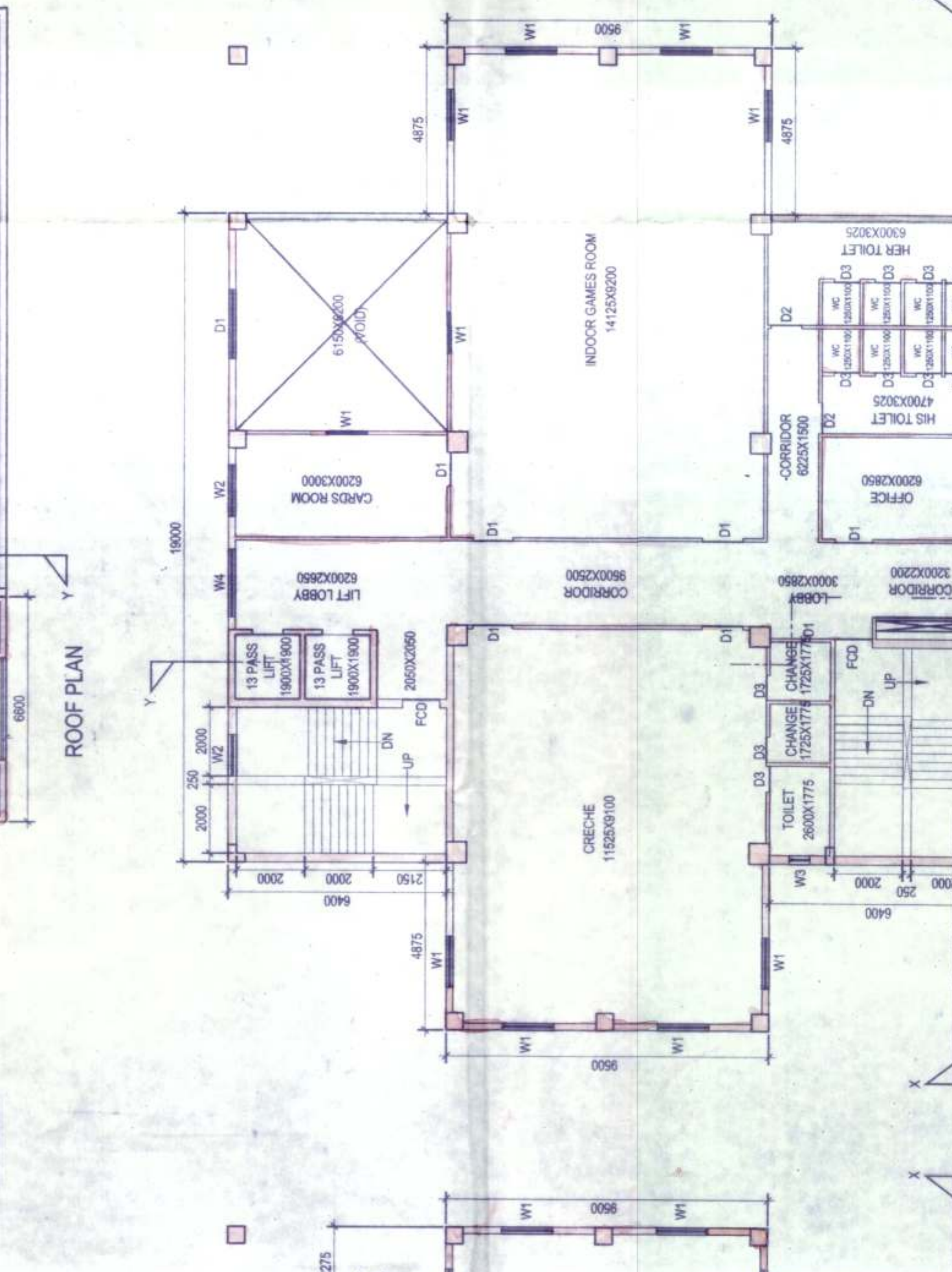
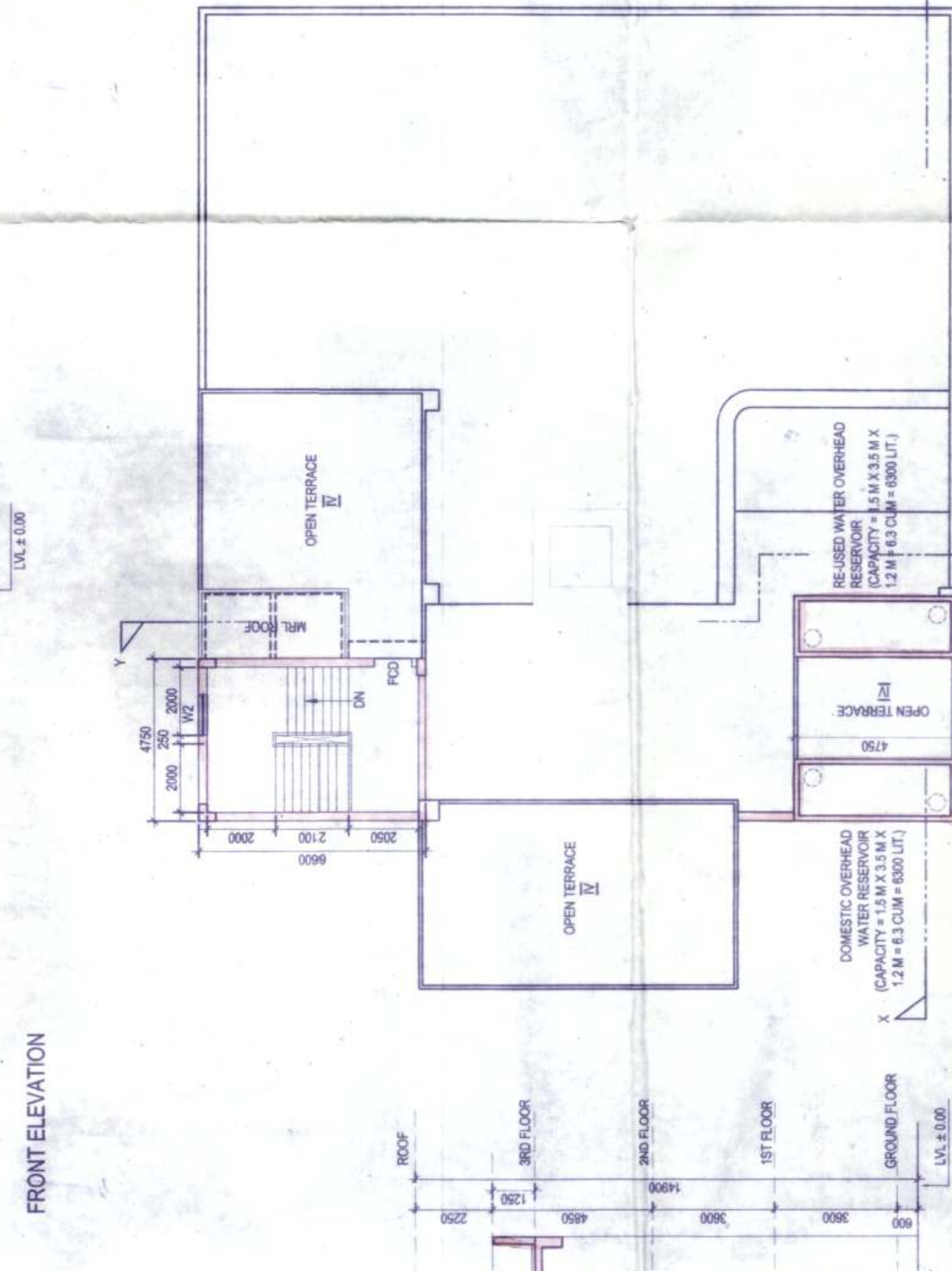
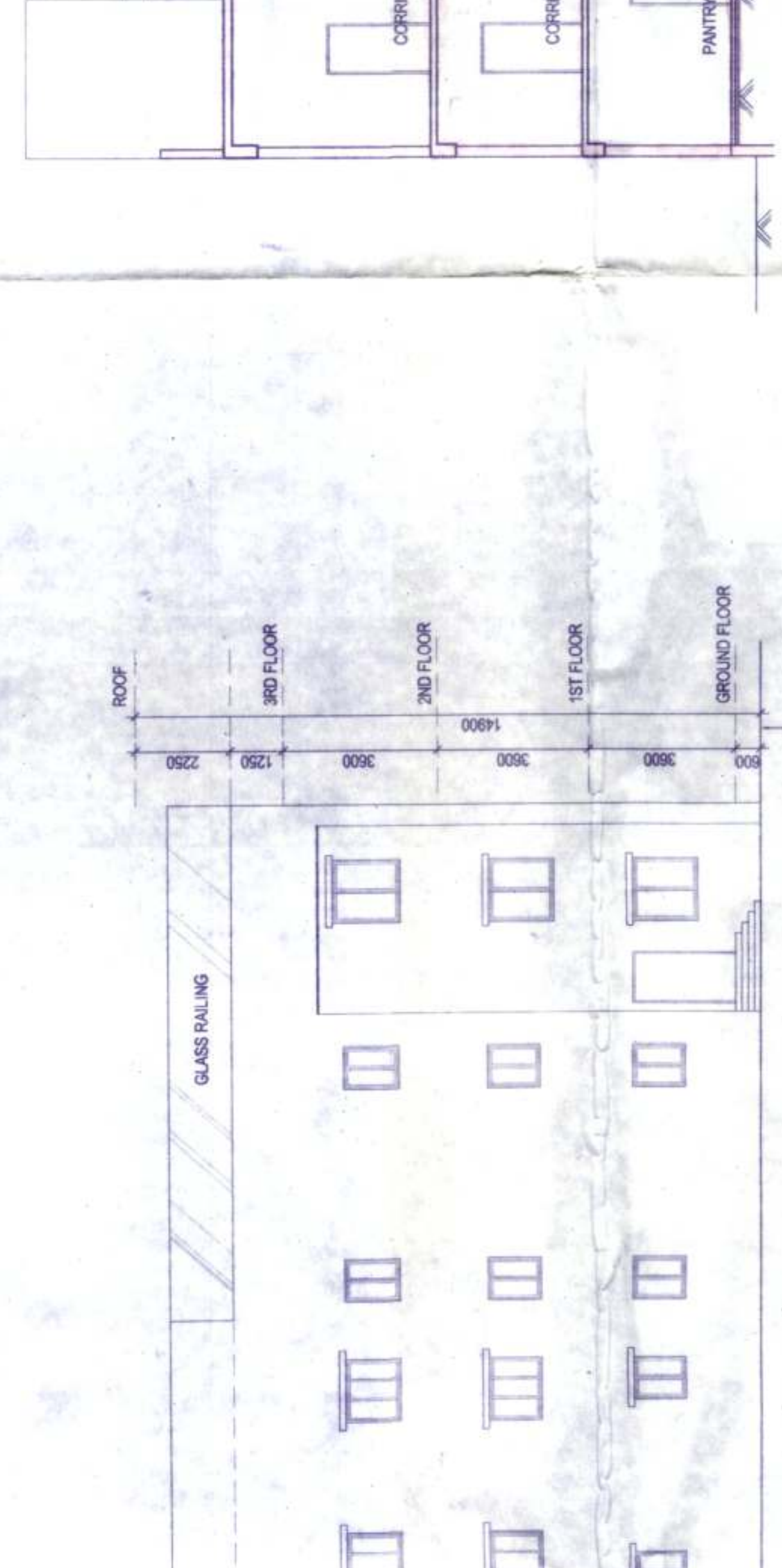
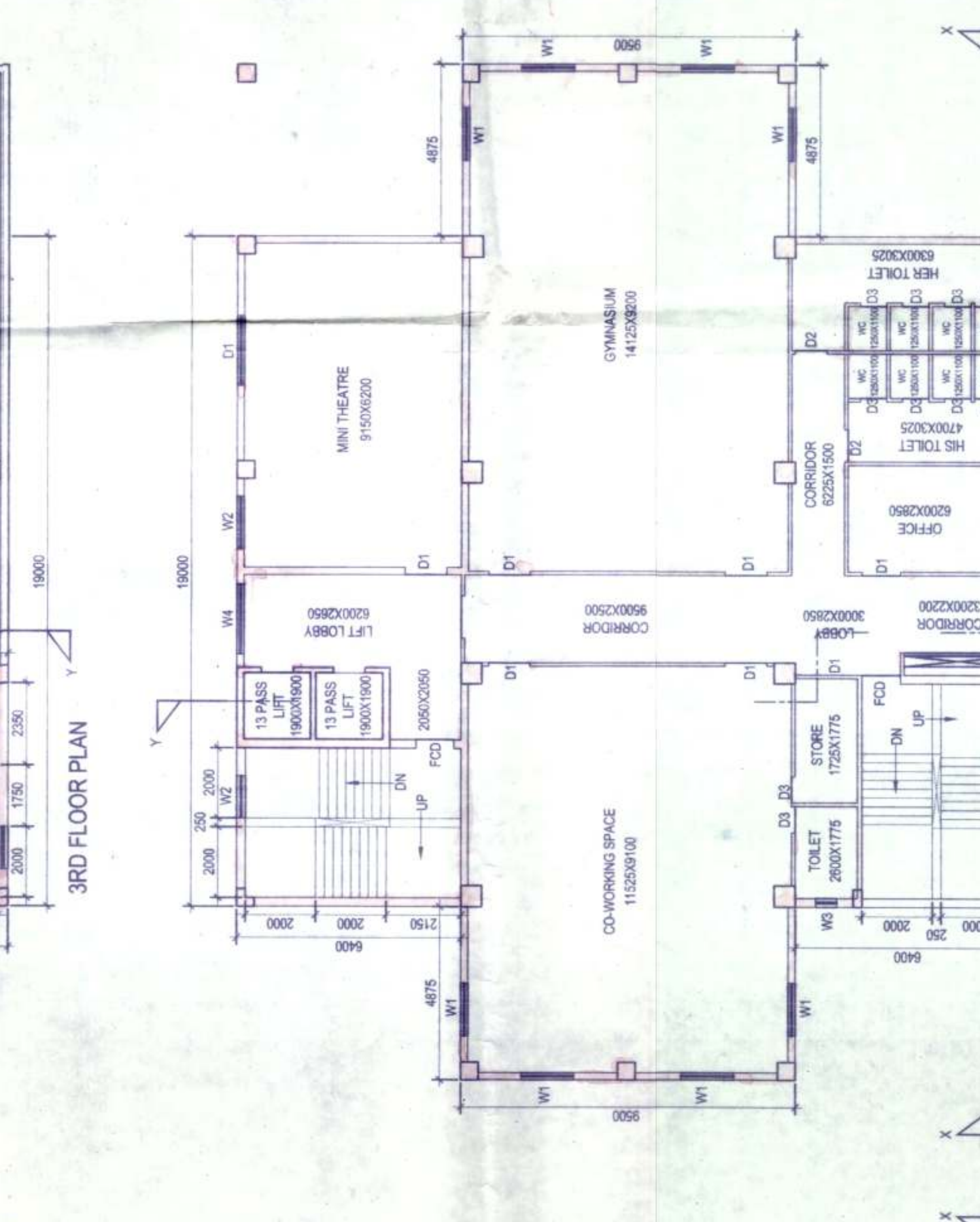
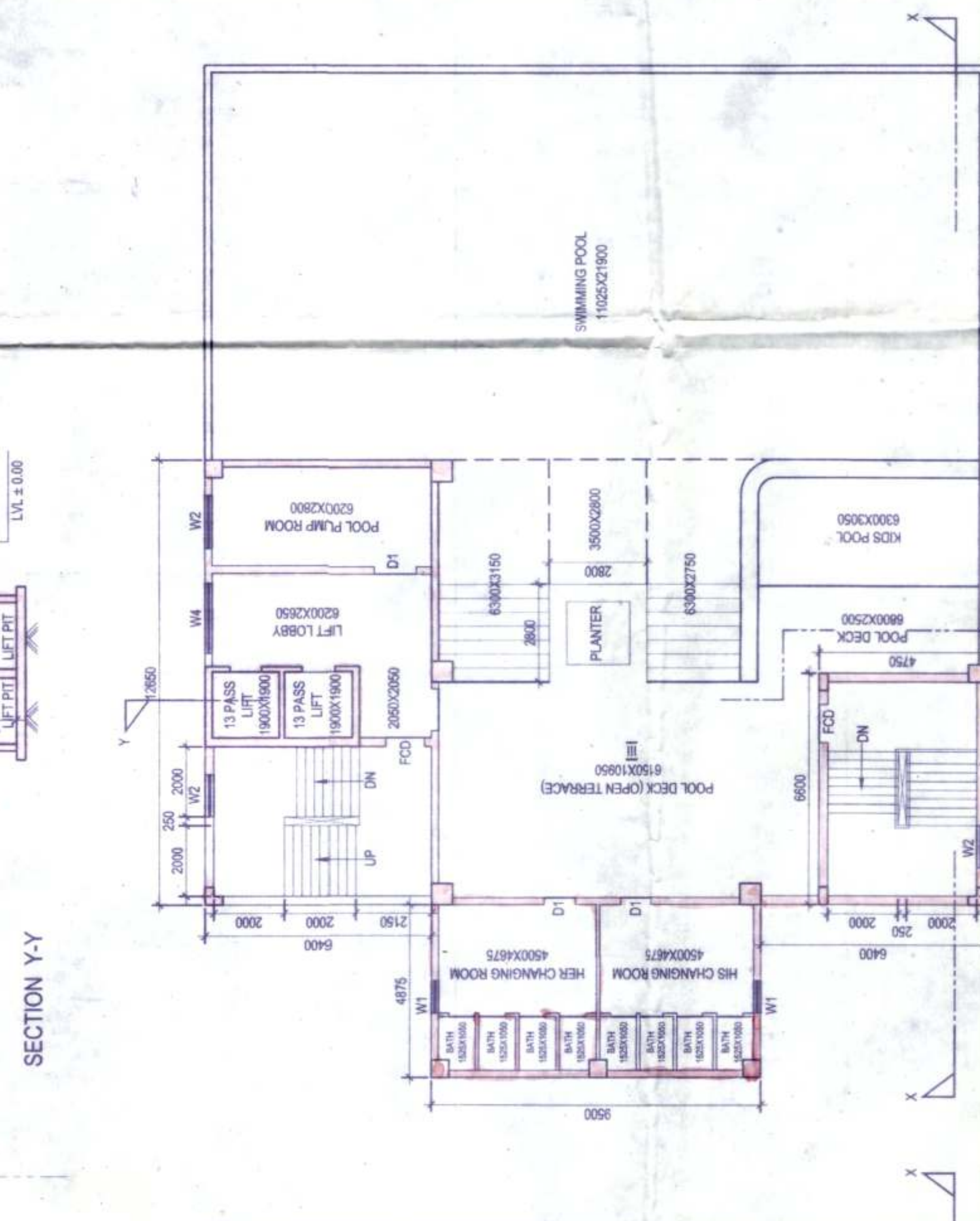
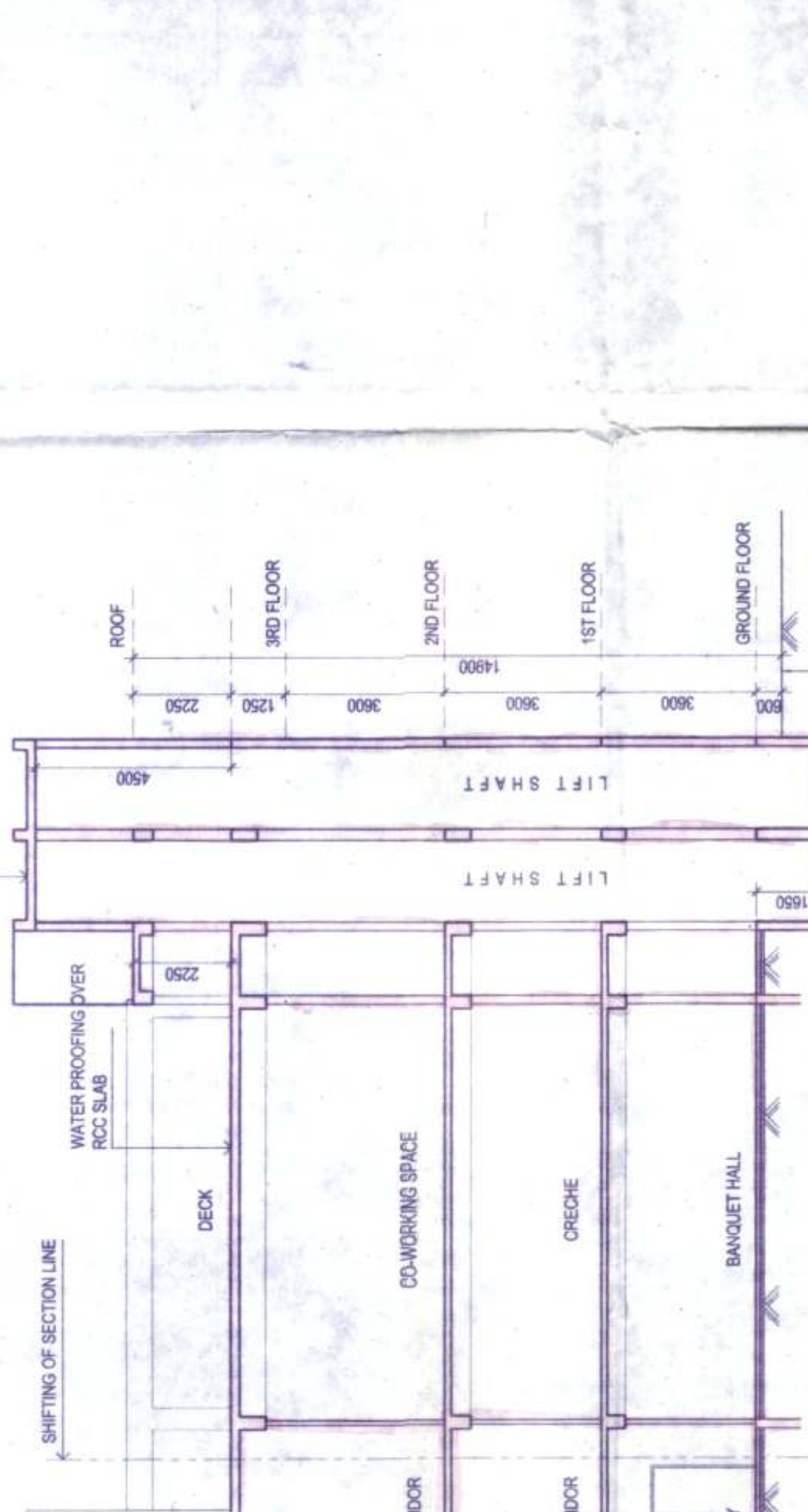
PROF. RAJESH K. CHAKRABORTY

10, RAJENDRA NAGAR, KOLKATA - 700016

PH: 91-32-2465-1130 / 4139

EMAIL: info@sanjivparikh.com

WEBSITE: www.sanjivparikh.com



Approved Order No. 240/PS
Date: 27-09-2021
MRD No. 21-09-2021
Rajshahi, North 24 Parganas
Executive Officer
[Signature]
SANCTIONED & APPROVED

NEW TOWN KOLKATA DEVELOPMENT AUTHORITY
Director of Planning & Construction Services
Memo No. 8201/NKPA/BPS-04(23)/1020
Date: 21/8/21

Building Particulars: Proposed R+G+TH (Block 1, 2, 3A) G+X+1/Block 1, 2, 3A, under planning of Govt. (K-720135)

Revised/Additional Comp. Under Review - Chapter 3, 1A

Note: All recommendations from Planning Control Board should be **strongly** followed at the time of construction.

Note: Sh. MOC has reviewed all the plans & documents submitted by the applicant and forwarded by the Addl. Executive Officer, North 24 Parganas. It is noted that there are no technical objections of any kind or points to be raised. If there are no technical objections, the plans are approved as per the conditions of the approved plan, drawing, etc. as per the plan. The applicant is directed to submit the approved plan, drawing, etc. to the concerned department for the execution of the project.

Sanjay Sondal
Chief Architect
Tapas Kumar Datta
New Town Kolkata Development Authority

FOR RECORD ONLY.
REPORT AND NOT CHECKED AND NOT TEST
STRUCTURAL DRAWINGS, STRUCTURAL CALCULATIONS & COL TEST

EMPLOYER'S NAME	EMPLOYER'S NO.	EMPLOYER'S ADDRESS	EMPLOYER'S PHONE NO.
Asstt. Commr. S.W.	KCHN/NKPA/10/0030		
Chief Structural Engineer	STER/NKPA/09/0026		
Geo-Technical Engineer	CTER-H100/09/0015		
Town Planning/Urban Designer			
Structural Reviewer	STER/NKPA/10/0030		

20